

START YOUR JOURNEY TO BETTER EMOTIONAL HEALTH.

As an Excellus BlueCross BlueShield (BCBS) member, you have access to a wide range of behavioral health programs and tools, as well as a full team of behavioral health specialists made up of our on-staff doctors, pharmacists, registered nurses, licensed social workers, and more. But how does it all work? Follow Christine as she connects with our team and uses what's included in her plan to improve her emotional wellbeing.



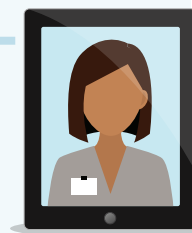
He then took their conversation back to the rest of the Excellus BCBS team, **coordinating with our nurses, doctors, and social workers** to figure out the best course of action for Christine.



The team concluded that daily stress management should do the trick. Tom suggested that she **download the Wellframe® app**, which they used to develop her personalized plan.



Now that Christine is better managing her stress, she suffers fewer headaches and is loving her new job. She still stays in touch with Tom, sharing her progress and working together to set new goals.



Christine's plan also included regular sessions with a therapist. To avoid the stress of fitting office visits into her schedule, she uses **telemedicine to meet virtually**.

Take your first step today.

Download the FREE Wellframe® app to connect with a Care Manager (access code: EXCELLUS)

Or call our Care Management Team at 1-877-222-1240 (TTY: 1-800-662-1220)

Monday - Friday, 8 a.m. to 5 p.m. ET

Copyright © 2020, Excellus BlueCross BlueShield, a nonprofit independent licensee of the Blue Cross Blue Shield Association. All rights reserved.

Our Health Plan complies with federal civil rights laws. We do not discriminate on the basis of race, color, origin, age, disability, or sex. Atención: Si habla español, contamos con ayuda gratuita de idiomas disponible para usted. Consulte el documento adjunto para ver las formas en que puede comunicarse con nosotros. 注意：如果您说中文，我们可为您提供免费的语言协助。请参见随附的文件以获取我们的联系方式。

B-7584/16118-22M
Ay11CS05/09/22

