



Integrated Medical & Pharmacy Diabetes Programs

# Lowering costs and protecting employees with diabetes

Excellus 

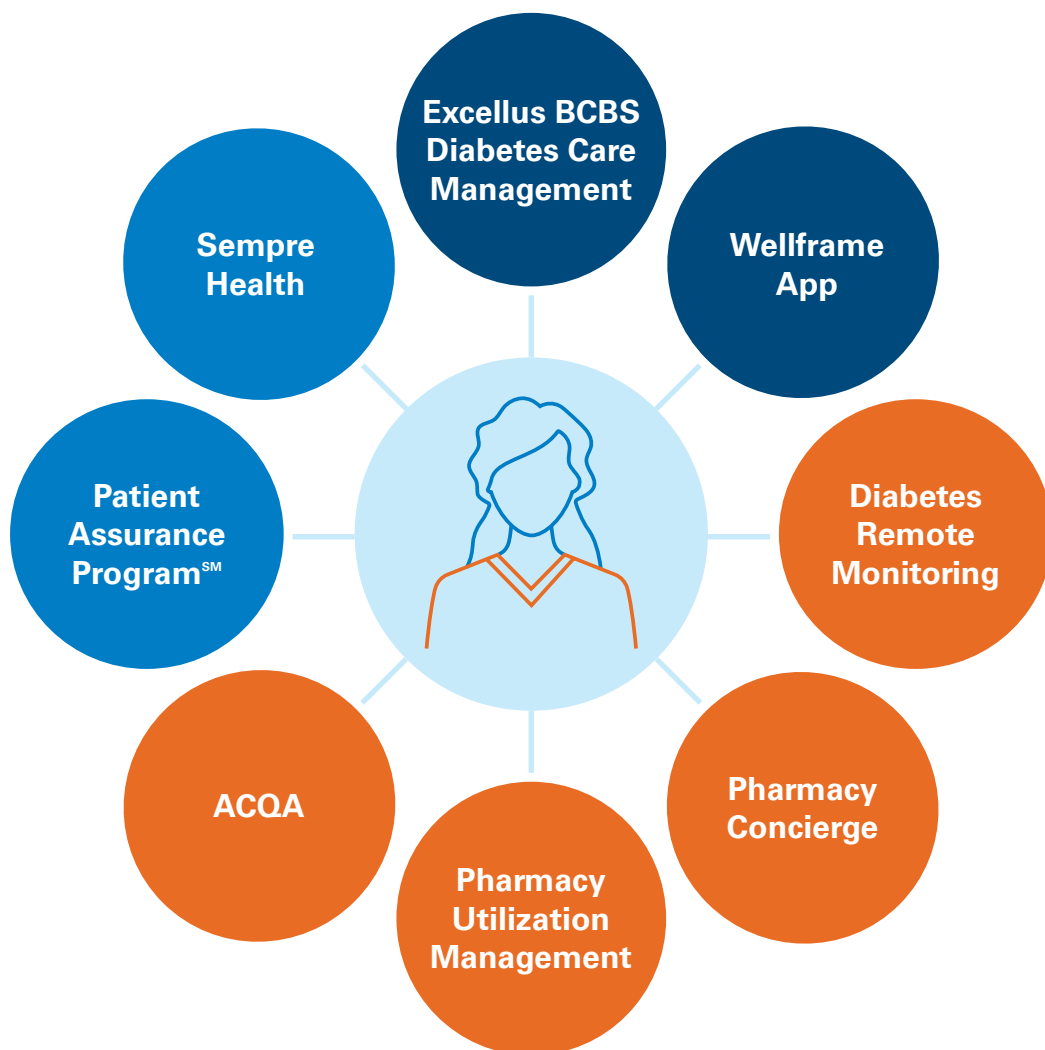
Everybody Benefits

Our model is built to bring all your benefits together, providing an integrated and holistic approach to health care by leveraging medical and pharmacy data. When medical and pharmacy teams are working collaboratively, it's proven that the best care, while driving towards the lowest cost can be delivered.

## Group savings opportunity\*

# \$117

per diabetic member per month



### ● Average business savings\*

Diabetes Remote Monitoring:  
**\$80.00 - \$85.00**  
per diabetic member per month

Pharmacy Concierge:  
**\$16.74** per diabetic member per month

Pharmacy UM:  
**\$8.81** per diabetic member per month

ACQA:  
**\$6.69** per diabetic member per month

### ● Supportive care\*\*

Average cost avoidance:  
**\$362** per engaged member per month  
**45%** decrease in emergency department visits  
**54%** decrease in inpatient admits  
**65%** decrease in preventable admits

### ● Average member savings\*

Patient Assurance Program: **\$124** per diabetic member per year

Sempre Health: **\$230** per member per year

\* Health Plan Commercial Rx Book of Business (BoB) Data, these are averages based on BoB data and are not guarantees.

\*\*Outcomes data above is based on full year 2022 claims experience for members engaged in Care Management / Disease Management with a primary diagnosis of diabetes, using a pre/post methodology.

With our integrated medical and pharmacy<sup>1</sup> coverage we offer the following diabetes support to you and your team:



### **ACQA**

An Accountable Cost & Quality Agreement (ACQA), is our approach to value-based payment agreements, where we collaborate with our ACQA physicians by providing them data and tools they need to better care for patients.



### **Sempre Health<sup>3</sup>**

An SMS text-based program that addresses prescription affordability and increases adherence for eligible members. The program provides a member copay incentive for filling their medication on time, each month.



### **Pharmacy Concierge<sup>2</sup>**

A retrospective utilization management support program that identifies and provides voluntary insights to providers.



### **Patient Assurance Program<sup>SM</sup>**

Members will pay no more than \$25 per 30 days for eligible drugs. Up to \$50 is provided by manufacturer assistance and in some instances a discount by the health plan.



### **Utilization Management**

Formulary strategies driving to high clinical value and lowest net cost medications. These management programs include Prior Authorization, Step Therapy and Quantity Limits.



### **Excellus BCBS Diabetes Care Management Team**

Our on-staff team coordinates with one another – and our provider network – to deliver support and guidance to employees.



### **Diabetes Remote Monitoring**

Employees with diabetes can opt-in to have pharmacists actively monitor their blood sugar to help manage their condition.



### **Wellframe<sup>®</sup> App**

A mobile app that puts answers, tools, educational materials and more at your employees' fingertips.

Over the last few years, market and social events have led to increased costs and use of GLP-1 medications such as Ozempic<sup>®</sup>, or Mounjaro<sup>®</sup>. Excellus BlueCross BlueShield (BCBS) has kept pace with these events and is ensuring appropriate use with our Utilization Management programs.

Currently we are saving businesses an average of \$2.66 PMPM\* through GLP-1 Utilization Management.

<sup>1</sup> Program eligibility, election process and shared savings fee may vary by funding arrangement.

<sup>2</sup> A buy-up for self-funded, minimum premium, and article 47 groups.

<sup>3</sup> Self-funded, minimum premium, article 47 groups must enroll in Pharmacy Concierge to be eligible.





**Have questions around savings  
your team could see with these  
integrated diabetes programs?  
Contact your broker or Excellus  
BCBS account manager.**



Sempre Health is an independent company that Excellus BlueCross BlueShield have team up with for a medication adherence and discount program to help with Pharmacy Benefits. Wellframe is an independent company that provides a health and wellness support mobile app to Excellus BCBS members.  
Copyright © 2024, Excellus BlueCross BlueShield, a nonprofit independent licensee of the Blue Cross Blue Shield Association. All rights reserved. Our Health Plan complies with federal civil rights laws. We do not discriminate on the basis of race, color, origin, age, disability, or sex. Atención: Si habla español, contamos con ayuda gratuita de idiomas disponible para usted. Consulte el documento adjunto para ver las formas en que puede comunicarse con nosotros.  
注意：如果您说中文，我们可为您提供免费的语言协助。请参见随附的文件以获取我们的联系方式。